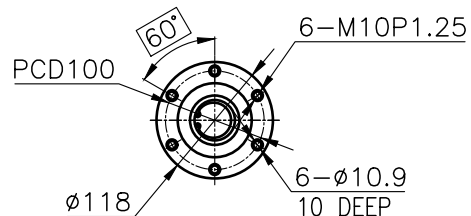
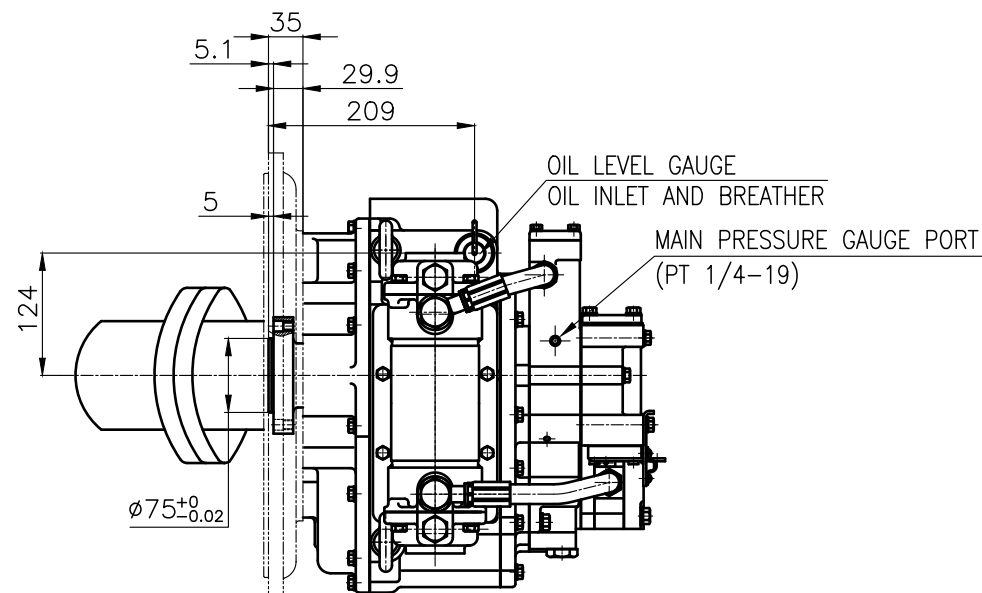


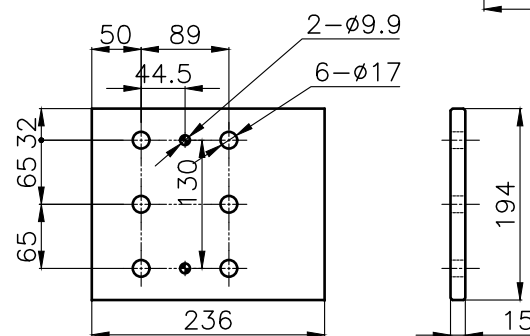
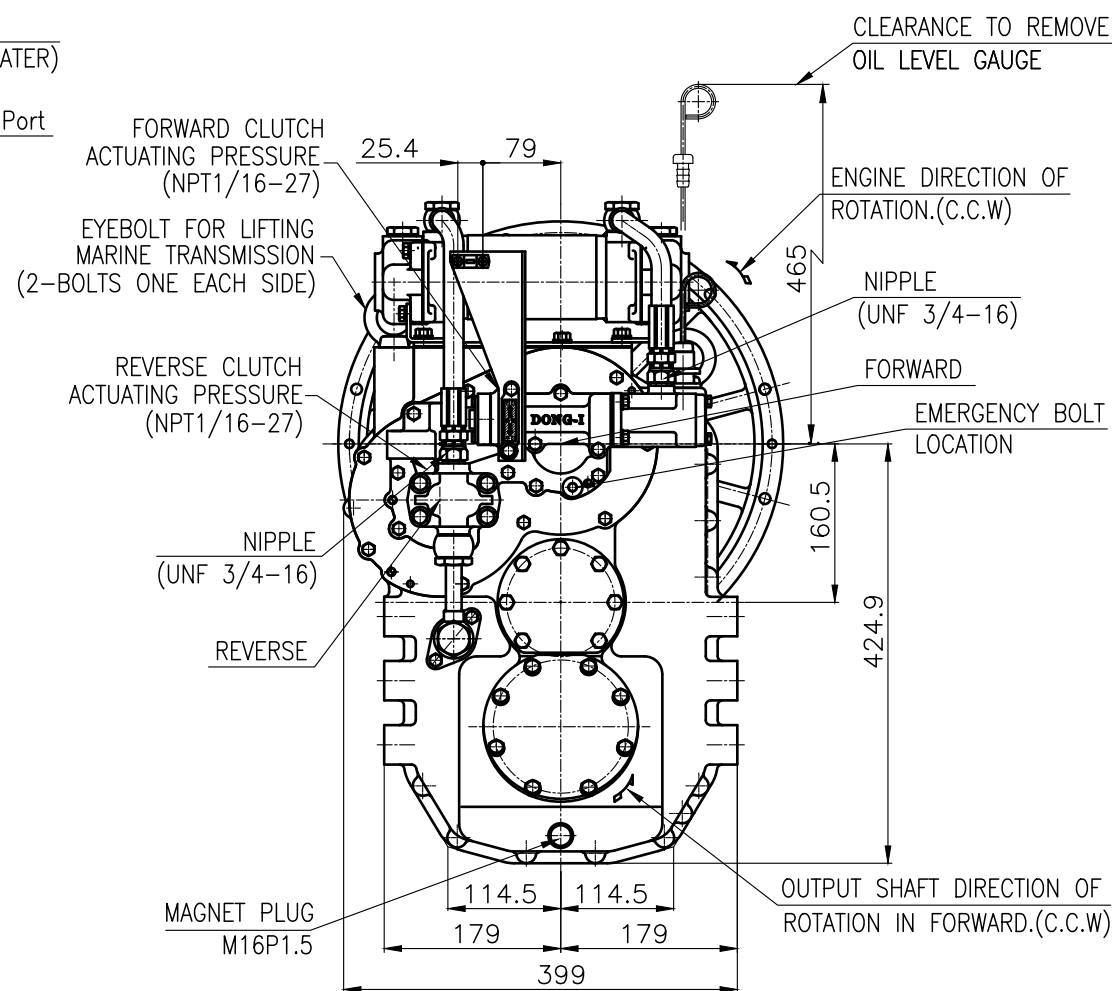
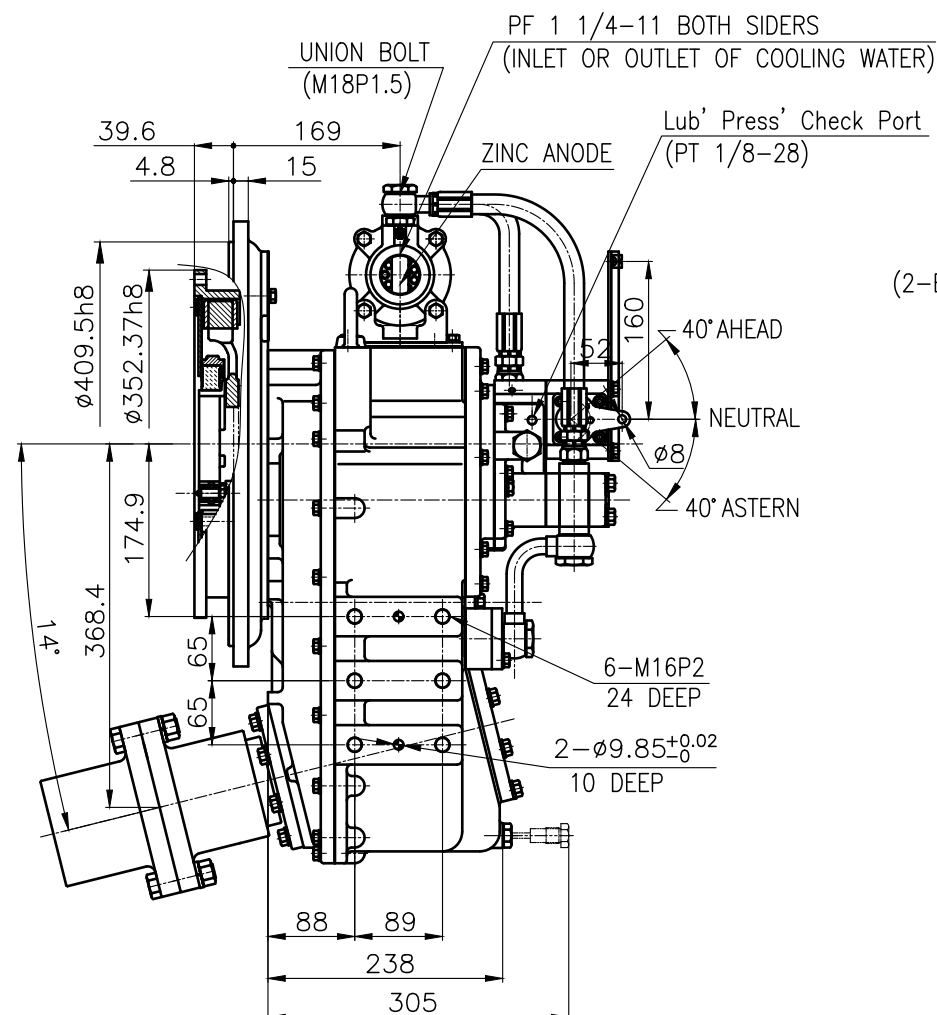
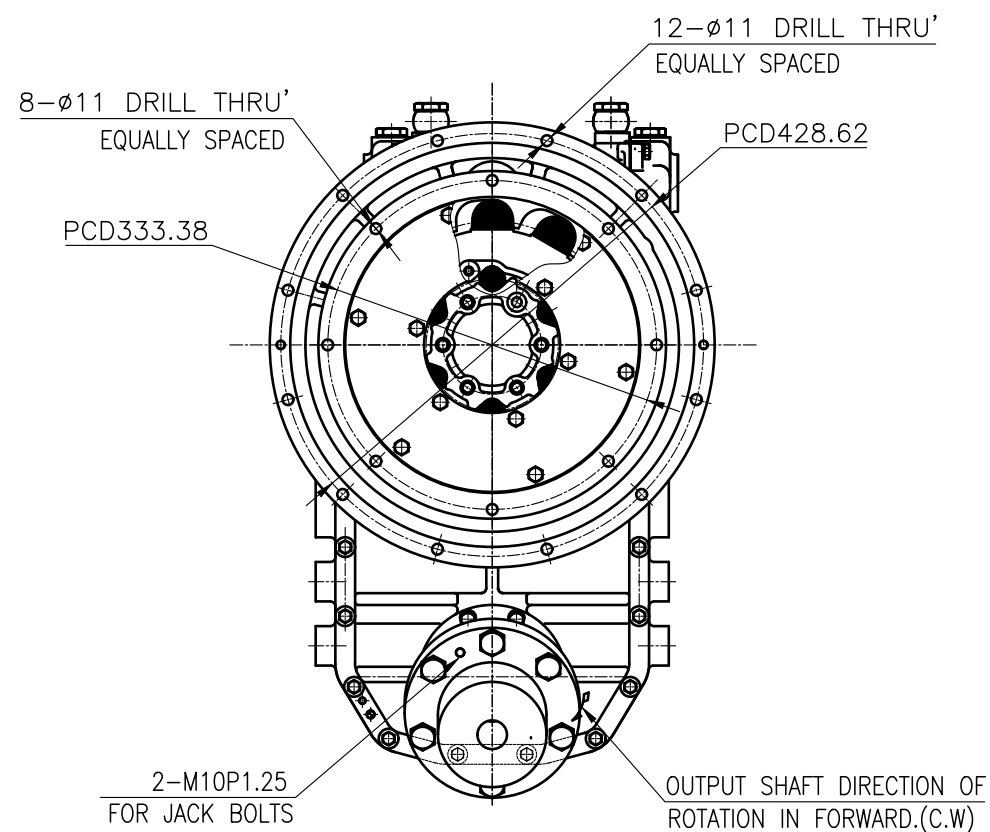
OUTPUT SHAFT COUPLING & PROPELLER COUPLING DIMENSION



INPUT COUPLING DIMENSION



DMT100IV MARINE TRANSMISSION SPECIFICATION			
GEAR RATIO	1.21, 1.54, 1.84, 2.12, 2.52		
TOTAL WEIGHT	APPROX 150 kg(DRY)		
OIL CAPACITY	APPROX. 7 L		
OIL VISCOSITY	SAE # 30		
OIL PRESSURE	1.961 ~ 2.353MPa	CLUTCH OIL	
DIRECTION OF ROTATION IN FORWARD	INPUT	C.C.W VIEWED FROM THE STERN	
	OUTPUT	C.C.W VIEWED FROM THE STERN	
OIL CHANGE INTERVAL	THE FIRST 100HOURS OF INITIAL OPERATION		
	AND EVERY 1000HOURS THEREAFTER		
SHIFTING LIMIT	UNDER 50% OF THE RATED ENGINE SPEED		
OIL COOLER	WATER FLOW 40 ~ 60 L/min		
	TEMPERATURE OF COOLING WATER		MAX 32 °C
OPERATING TORQUE OF SHIFTING LEVER		UNDER 3 Nm	



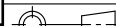
BRACKET DIMENSION

REMARK

1.HOUSING: SAE#3

2.DRIVING RING: SAE 11.5"

3.COUPLING TYPE : DUAL STAGE

허용 공차 TOLERANCE ON					번호 NO.	품 PART NO.	품 PART NAME 명		개수 Q'TY	재 질 MATERIAL	규 SIZE	비 고 REMARKS	
분 수 소 수 각 도 FRACTIONS DECIMALS ANGLES													원 도 번 ORIGINAL DWG. NO.
± ± ±										형 식 TYPE	DMT100IV		
일 구 분 조 급 종 급 정 급						작성 DATE 2018.06.20	척 도 SCALE N/S						
					승 인 APPROVED BY	검 도 CHECKED BY	제 도 DRAWN	설 계 DESIGNED	품 명 NAME	MARINE TRANSMISSION			
1 초과 4 이하 ± 0.3 ± 0.1 ± 0.05					JK.Kim	TH.Cha	CH.Baek						
4 16 ± 0.5 ± 0.2 ± 0.07													
16 63 ± 0.7 ± 0.3 ± 0.1													
63 250 ± 1.2 ± 0.5 ± 0.2								도 번 DWG. NO.	V100000GE~GH-3115DCH	개정 (REV) 000			
250 1000 ± 2.0 ± 0.8 ± 0.3								크 기 SIZE	A 3	코 드 번 호 CODE ID. NO.			
차													