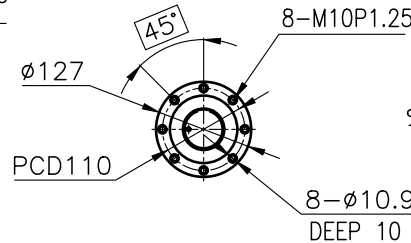
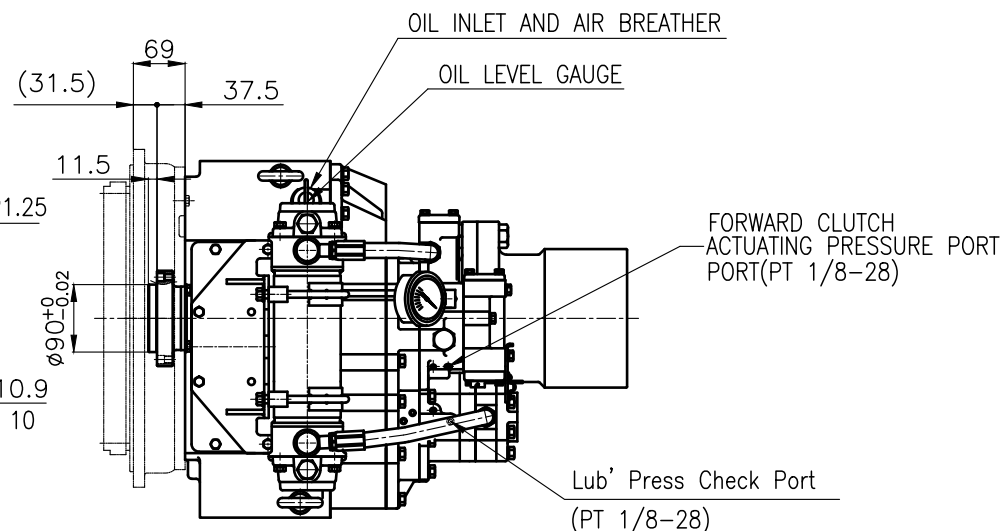


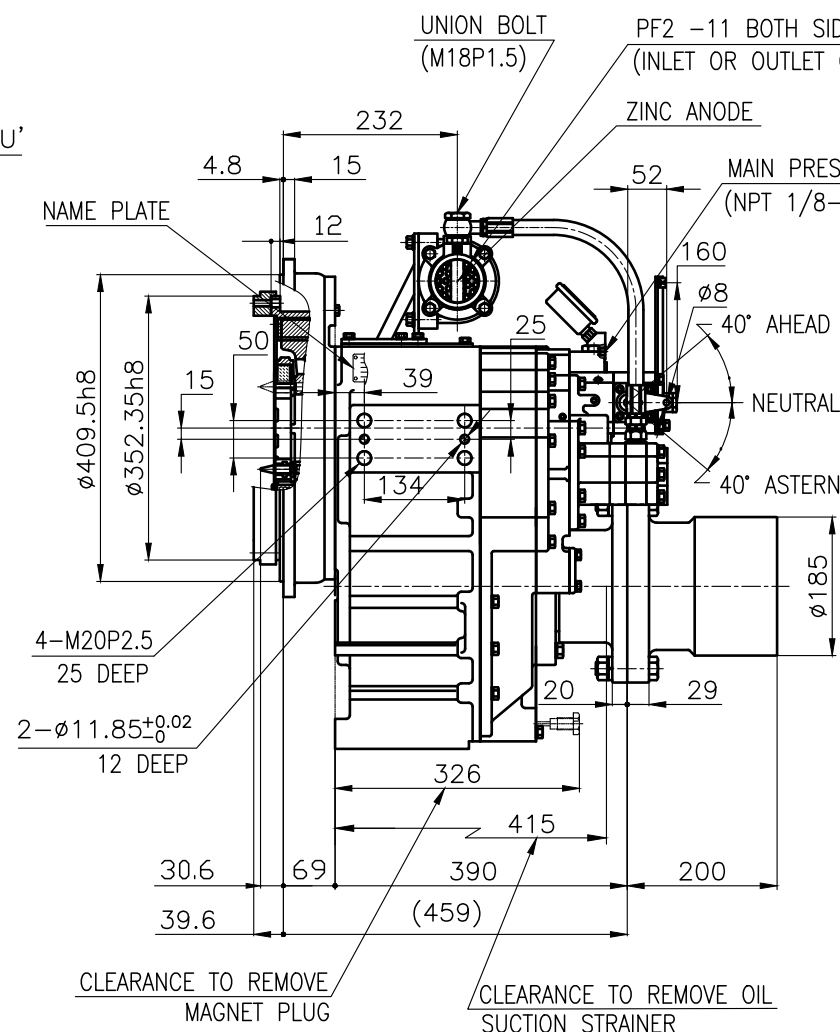
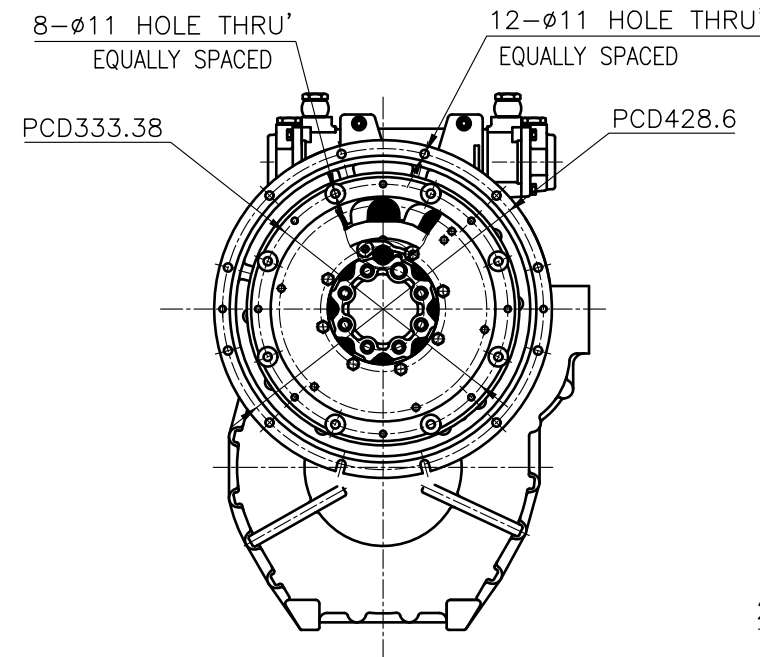
OUTPUT SHAFT COUPLING &  
PROPELLER COUPLING DIMENSION



INPUT COUPLING  
DIMENSION



DMT 190H MARINE TRANSMISSION SPECIFICATION			
GEAR RATIO	1.83, 2.09 , 2.52 , 3.08 , 3.43		
TOTAL WEIGHT	APPROX. 300 kg(DRY)		
OIL CAPACITY	APPROX. 5.5 L		
OIL VISCOSITY	SAE # 30		
OIL PRESSURE	1.96 ~ 2.54 MPa	CLUTCH OIL	
DIRECTION OF ROTATION IN FORWARD	INPUT	C.C.W VIEWED FROM THE STERN	
	OUTPUT	C.W VIEWED FROM THE STERN	
OIL CHANGE INTERVAL	THE FIRST 100HOURS OF INITIAL OPERATION		
	AND EVERY 1000HOURS THEREAFTER		
SHIFTING LIMIT	UNDER 50% OF THE RATED ENGINE SPEED		
OIL COOLER	WATER FLOW 40 ~ 60L/min		MAX 32℃
	TEMPERATURE OF COOLING WATER		
OPERATING TORQUE OF SHIFTING LEVER		UNDER 2.94Nm	



REVERSE CLUTCH  
ACTUATING PRESSURE PORT  
(PT 1/8-28)

EYEBOLT FOR LIFTING  
MARINE TRANSMISSION  
(2-BOLTS ONE EACH SIDE)

NIPPLE  
(UNF 3/4-16)

2-M12P1.75  
FOR JACK BOLTS

MAGNET PLUG  
M16P1.5

DRAIN PLUG  
M16P1.5

CLEARANCE TO REMOVE  
OIL LEVEL GAUGE

ENGINE DIRECTION OF  
ROTATION  
NIPPLE  
(UNF 3/4-16)

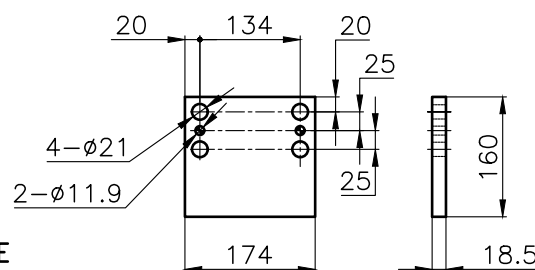
FORWARD

EMERGENCY BOLT  
LOCATION

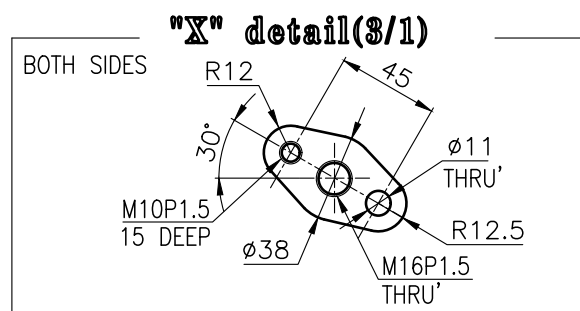
6-Ø21  
REAMER BOLTS

OUTPUT SHAFT DIRECTION OF  
ROTATION IN FORWARD

- REMARK
- 1.HOUSING: SAE#3
  - 2.DRIVING RING: SAE 11.5"
  - 3.COUPLING TYPE : DUAL STAGE
  - 4.APPLICATION ENGINE : STANDARD



BRACKET DIMENSION



TOLERANCE ON				PART NO.		PART NAME		Q'TY	MATERIAL	SIZE	REMARKS
FRACTIONS	DECIMALS	ANGLES									
±	±	±									
절삭가공				작성 DATE		척도 SCALE		형식 TYPE		DMT190H	
1 초과 4 이하	± 0.3	± 0.1	± 0.05	2018.06.29		1/1		MARINE TRANSMISSION		ORIGINAL DWG. NO.	
4	± 0.5	± 0.2	± 0.07	인도		검도		NAME		DMT190H	
16	± 0.7	± 0.3	± 0.1	승인		제도		DWG. NO.		190000A~E-3115DC	
63	± 1.2	± 0.5	± 0.2	JK.Kim		TH.Cha		크기 SIZE		A 8	
250	± 2.0	± 0.8	± 0.3	GH.Park		D-I INDUSTRIAL		코-드 번호 CODE ID. NO.			