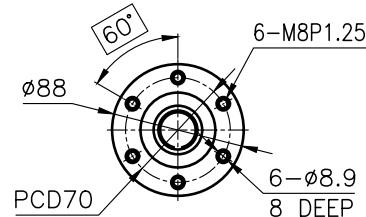
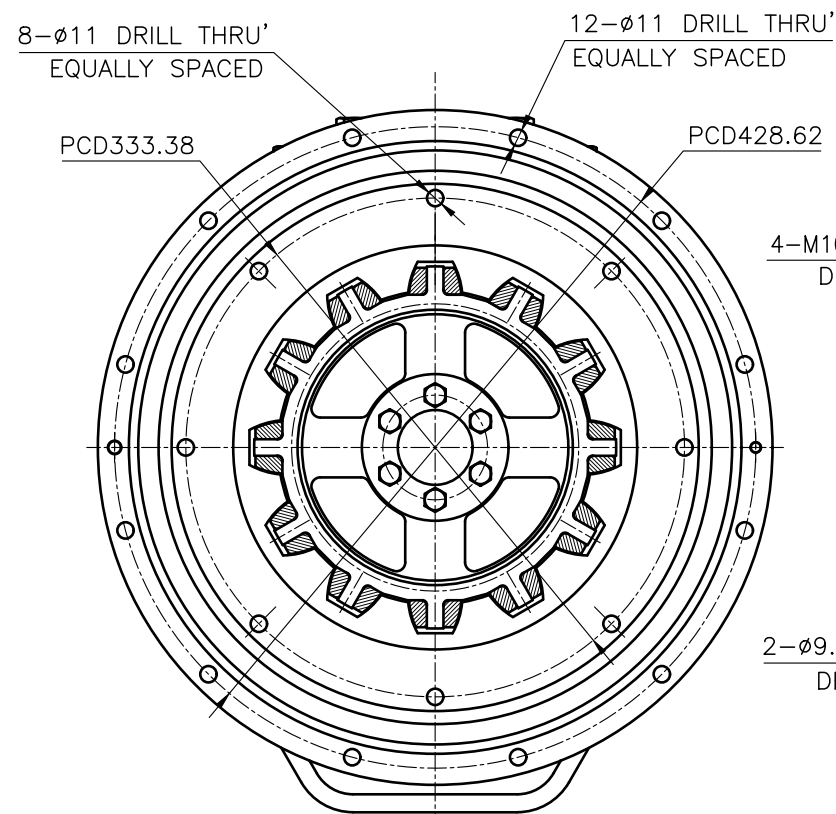


OUTPUT SHAFT COUPLING &
PROPELLER COUPLING DIMENSION

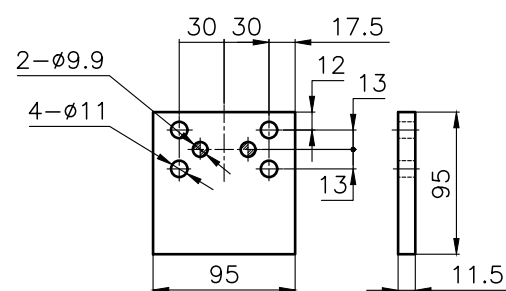


INPUT COUPLING
DIMENSION

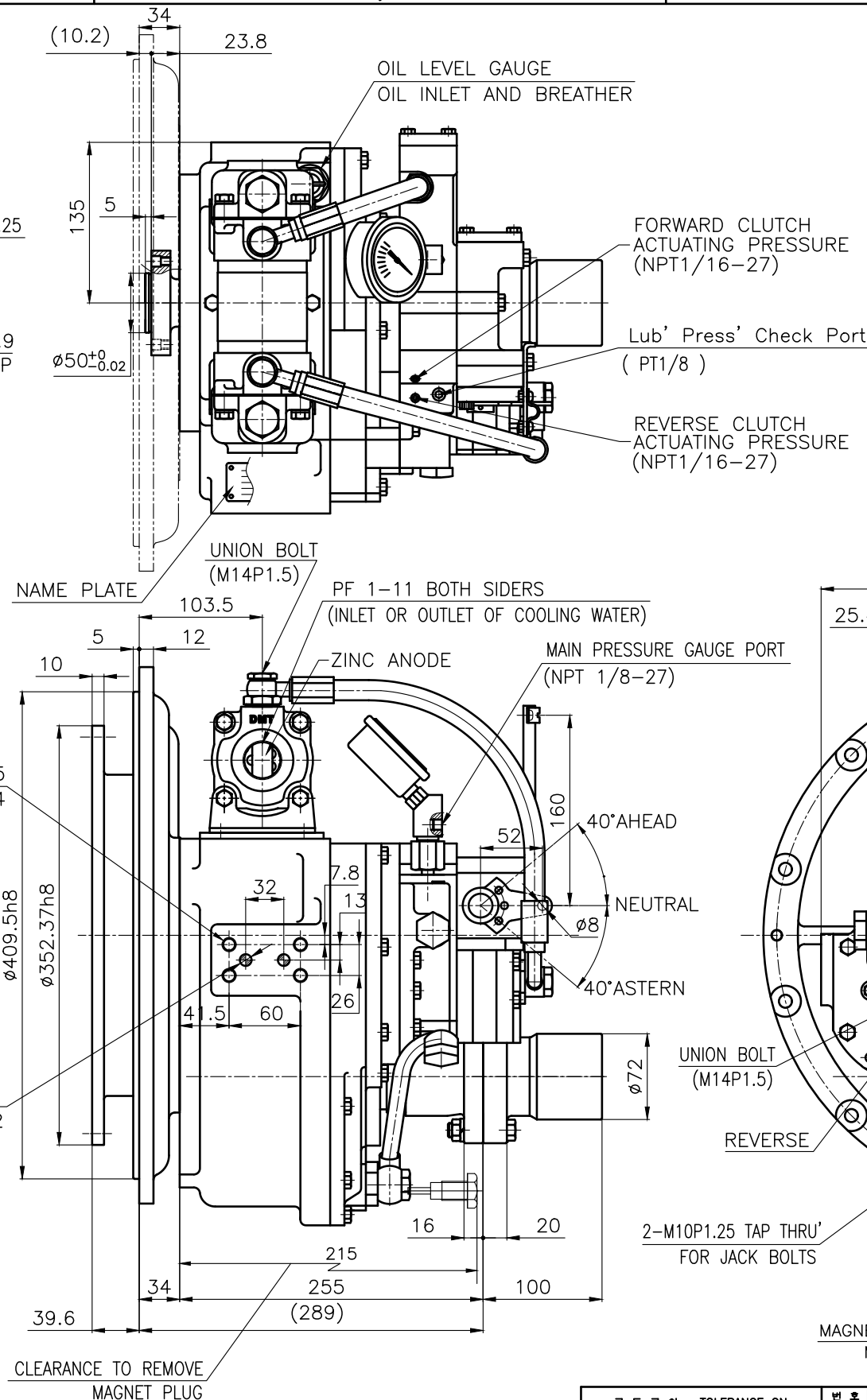


REMARK

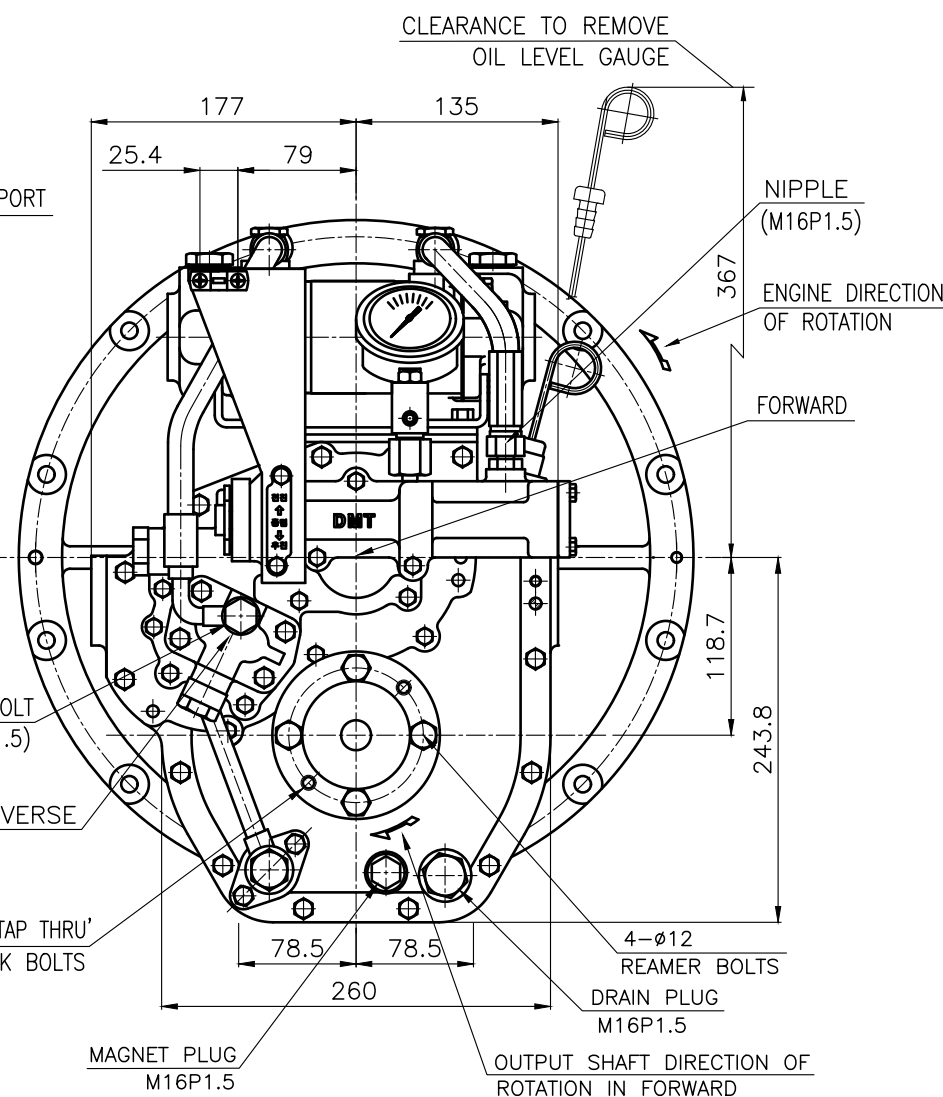
- 1.HOUSING: SAE#3
- 2.DRIVING RING: SAE 11.5"
- 3.COULING TYPE : RUBBER



BRACKET DIMENSION



DMT 25AL MARINE TRANSMISSION SPECIFICATION			
GEAR RATIO	1.64, 2.07, 2.52, 2.96, 3.32		
TOTAL WEIGHT	APPROX. 77 Kg(DRY)		
OIL CAPACITY	APPROX. 2L		
OIL VISCOSITY	SAE # 30		
OIL PRESSURE	1.96 ~ 2.35 MPa		CLUTCH OIL
DIRECTION OF ROTATION IN FORWARD	INPUT	C.C.W VIEWED FROM THE STERN	
	OUTPUT	C.W VIEWED FROM THE STERN	
OIL CHANGE INTERVAL	THE FIRST 100HOURS OF INITIAL OPERATION		
	AND EVERY 1000HOURS THEREAFTER		
SHIFTING LIMIT	UNDER 50% OF THE RATED ENGINE SPEED		
OIL COOLER	WATER FLOW 20 ~ 40 L/m		
	TEMPERATURE OF COOLING WATER		MAX 32°
OPERATING TORQUE OF SHIFTING LEVER			UNDER 2.94Nm



공통공차	TOLERANCE ON	번호	PART NO.	명	Q'TY	재질	SIZE	비고
분수	소수	각도						REMARKS
FRACTIONS	DECIMALS	ANGLES						원도 번호
±	±	±						ORIGINAL DWG. NO.
1 초과 4 이하	± 0.3	± 0.1	± 0.05	작성 DATE	2018.06.20	SCALE	N/S	TYPE
4 16	± 0.5	± 0.2	± 0.07	검도 CHECKED BY	TH.Cha	제도 DRAWN	설계 DESIGNED	NAME
16 63	± 0.7	± 0.3	± 0.1	승인 APPROVED BY	JK.Kim	재도 CHECKED BY	BJ.Moon	도 번호 DWG. NO.
63 250	± 1.2	± 0.5	± 0.2					025000LA~E-3115RC
250 1000	± 2.0	± 0.8	± 0.3					000
D-I INDUSTRIAL				크기 SIZE	A 3	코드 번호 CODE ID. NO.		