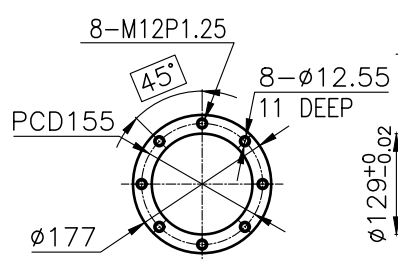
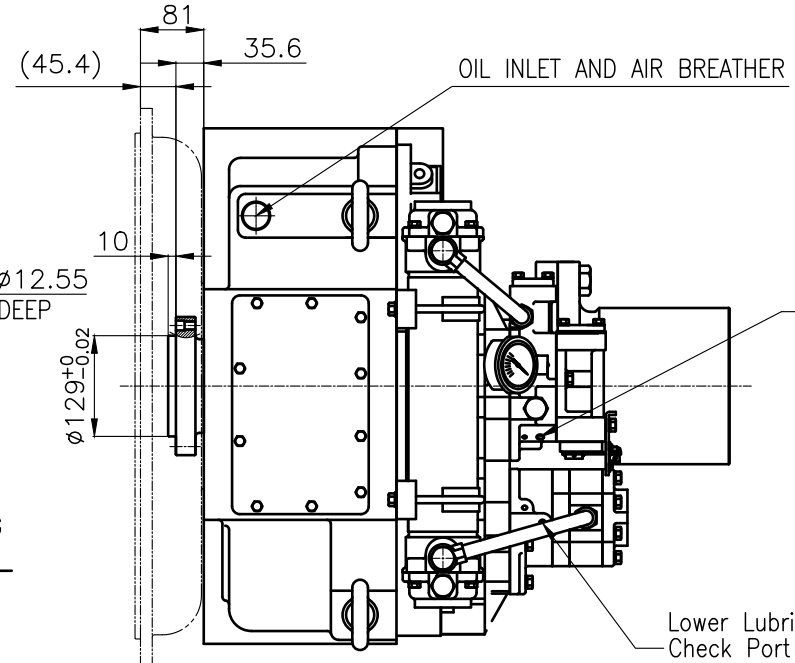


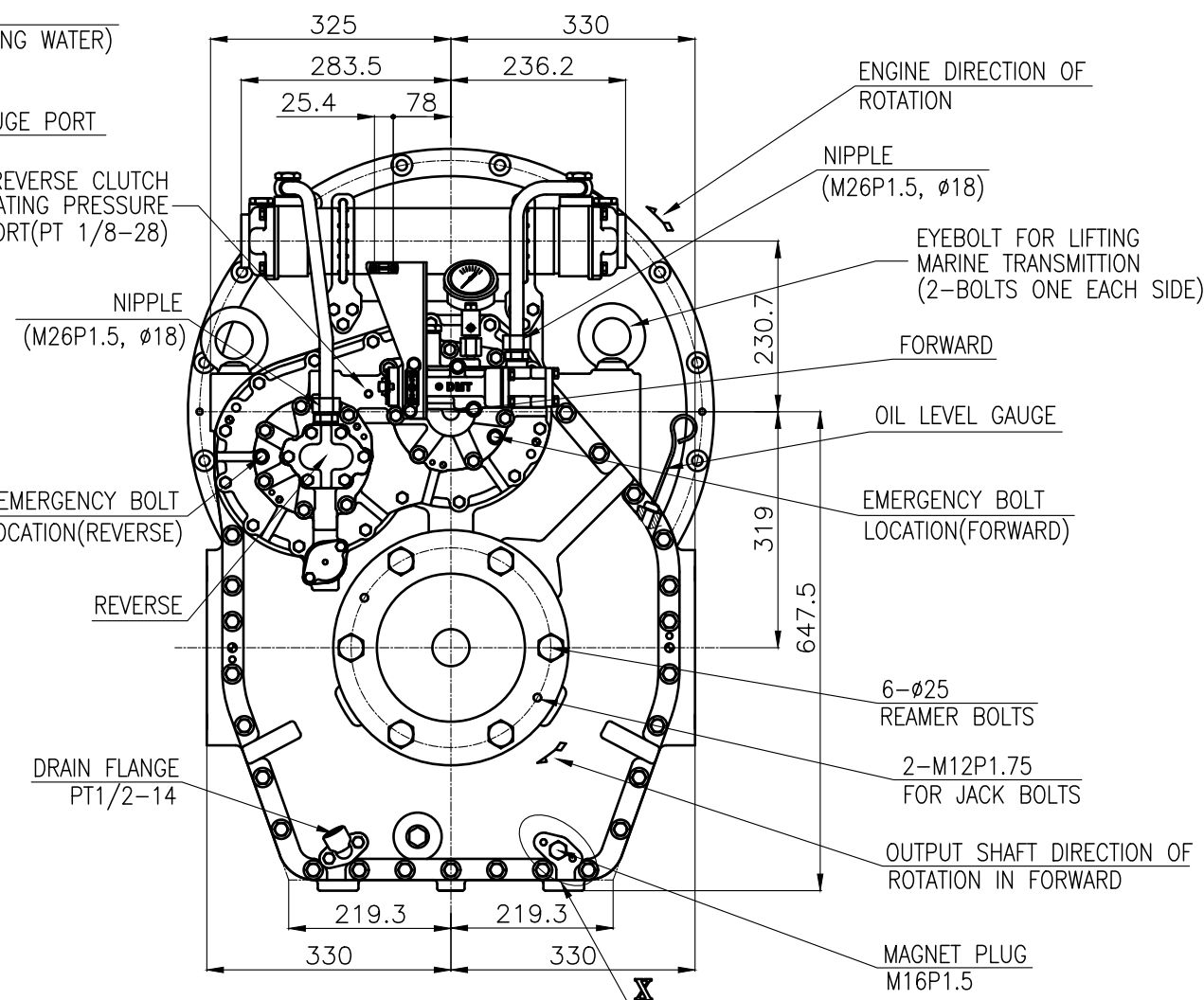
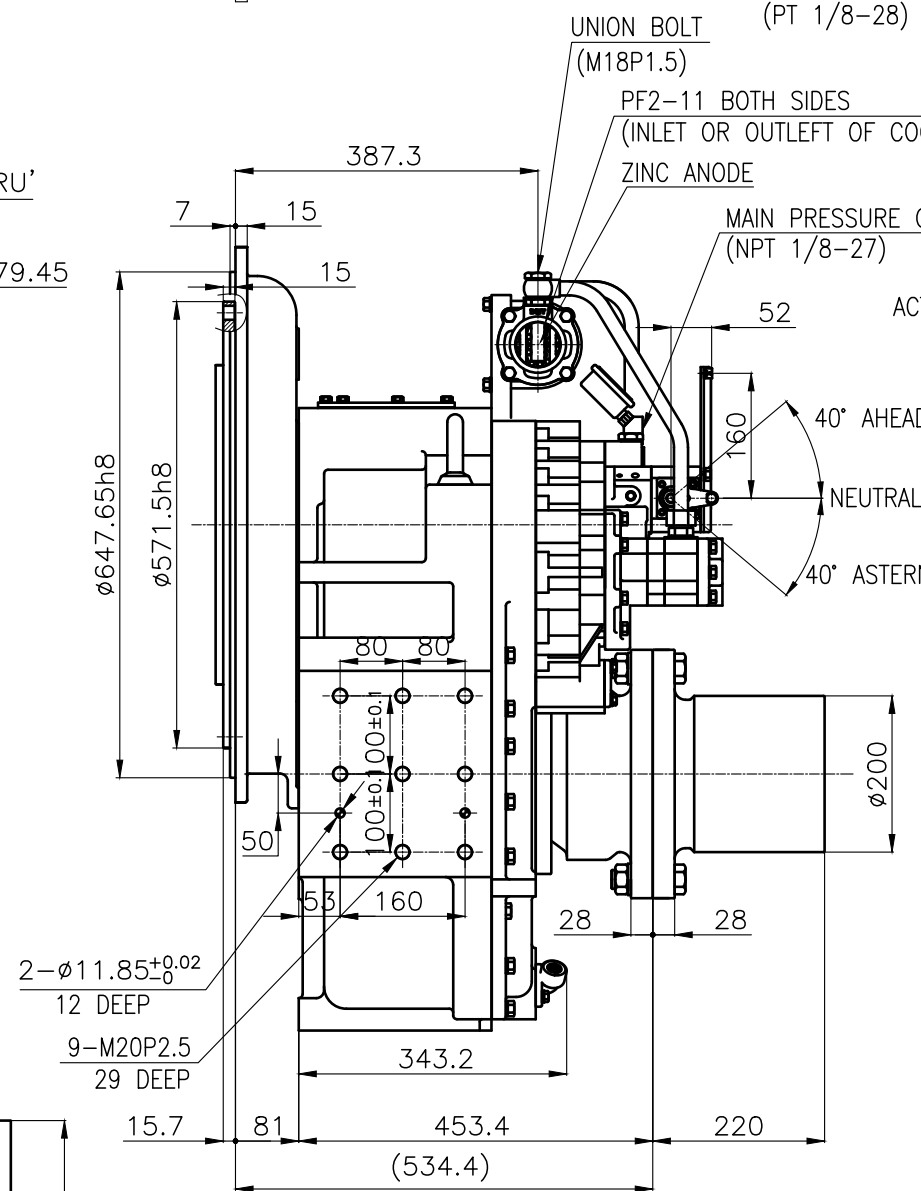
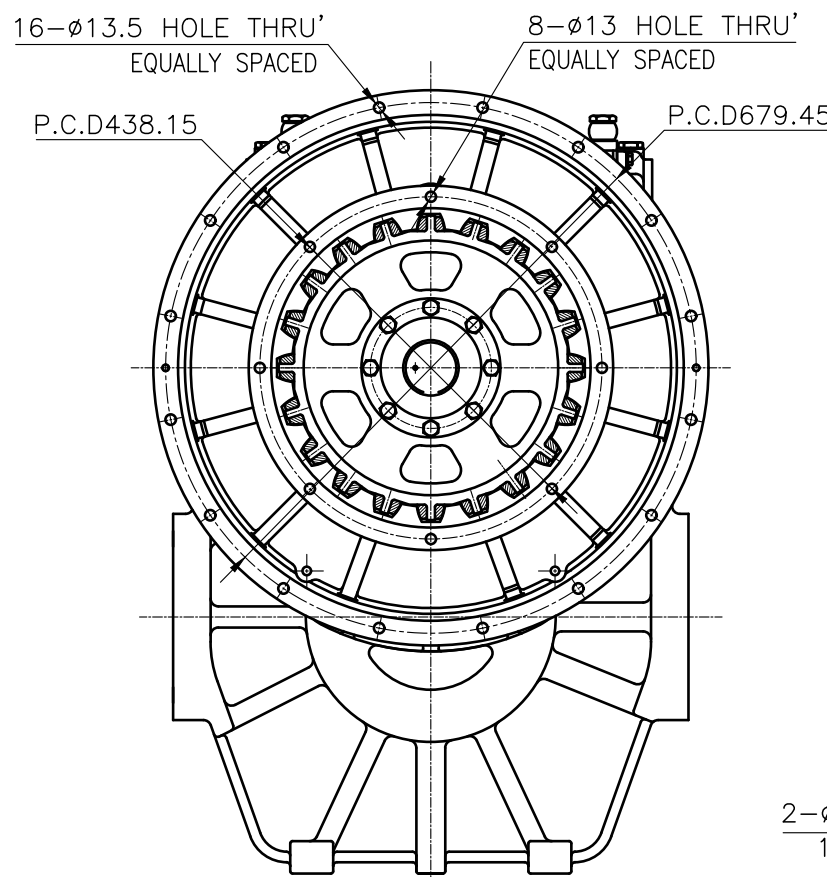
OUTPUT SHAFT COUPLING & PROPELLER COUPLING DIMENSION



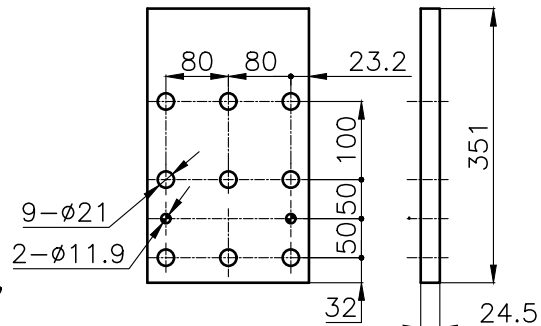
INPUT COUPLING DIMENSION



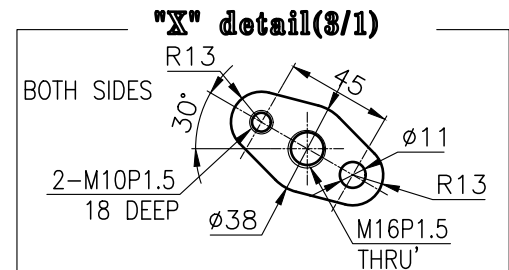
DMT300HL MARINE TRANSMISSION SPECIFICATION			
GEAR RATIO	2.61, 3.10, 3.56, 4.13, 4.59		
TOTAL WEIGHT	APPROX. 757 Kg(DRY)		
OIL CAPACITY	APPROX. 16.5 L		
OIL VISCOSITY	SAE #30		
OIL PRESSURE	1.96 ~ 2.54 MPa		CLUTCH OIL
DIRECTION OF ROTATION IN FORWARD	INPUT	C.C.W VIEWED FROM THE STERN	
	OUTPUT	C.W VIEWED FROM THE STERN	
OIL CHANGE INTERVAL	THE FIRST 100HOURS OF INITIAL OPERATION		
	AND EVERY 1000HOURS THEREAFTER		
SHIFTING LIMIT	UNDER 50% OF THE RATED ENGINE SPEED		
OIL COOLER	WATER FLOW 90 ~ 120L/m		
	TEMPERATURE OF COOLING WATER		MAX 32°
OPERATING TORQUE OF SHIFTING LEVER			UNDER 2.94Nm



REMARK
1.HOUSING: SAE#0
2.DRIVING RING: SAE 18"
3.COUPLING TYPE : RUBBER



BRACKET DIMENSION



公差 TOLERANCE ON				번호 NO.	부품 PART NO.	부품 PART NAME	개수 Q'TY	재질 MATERIAL	규격 SIZE	비고 REMARKS
분수 FRACTIONS	소수 DECIMALS	각도 ANGLES		재료 MATERIAL			형식 TYPE	DMT300HL		
±	±	±		작상 DATE 2018.06.29	척도 SCALE N/S		품명 NAME	MARINE TRANSMISSION		
일	구분	조급	중급	정급	승인 APPROVED BY JK.Kim	검도 CHECKED BY TH.Cha	제도 DRAWN BJ.Moon	설계 DESIGNED	도번 DWG. NO. 30000GA~E-018RC	개량 (REV.) 000
반	1 초과 4 이하	± 0.3	± 0.1	± 0.05	D-I INDUSTRIAL			크기 SIZE A 3	코드 번호 CODE ID. NO.	
공	4 16	± 0.5	± 0.2	± 0.07						
차	16 63	± 0.7	± 0.3	± 0.1						
	63 250	± 1.2	± 0.5	± 0.2						
	250 1000	± 2.0	± 0.8	± 0.3						