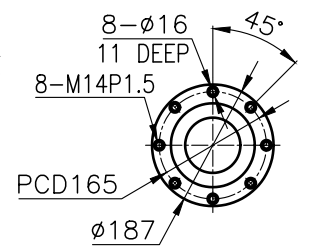
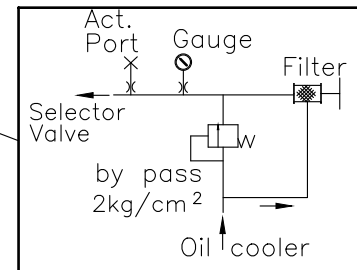
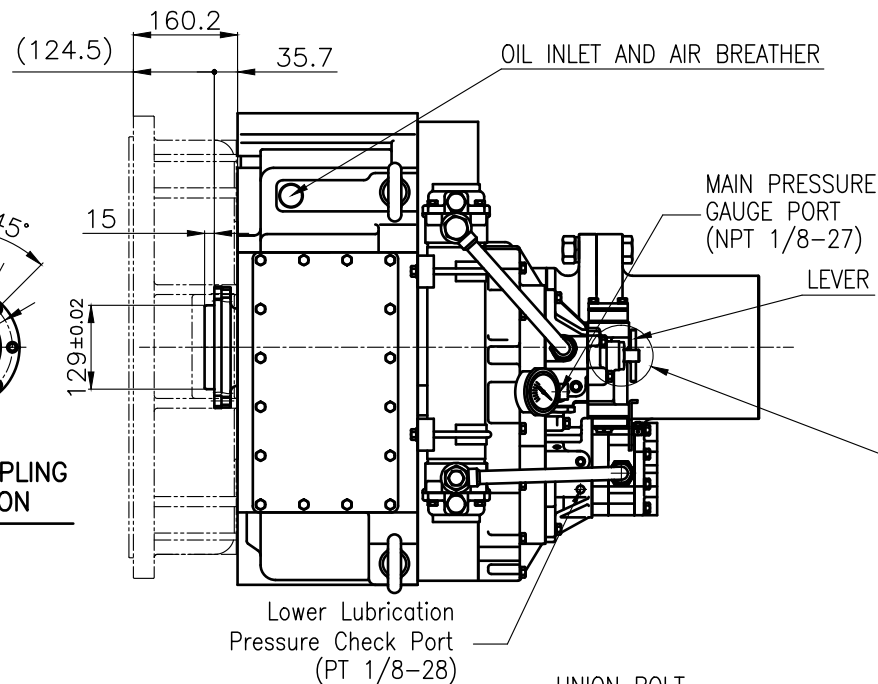


### OUTPUT SHAFT COUPLING & PROPELLER COUPLING DIMENSION

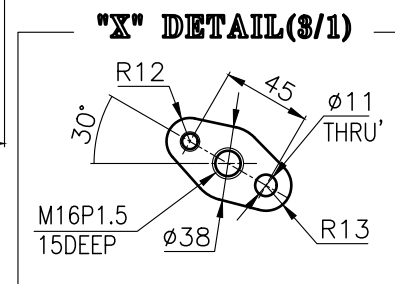
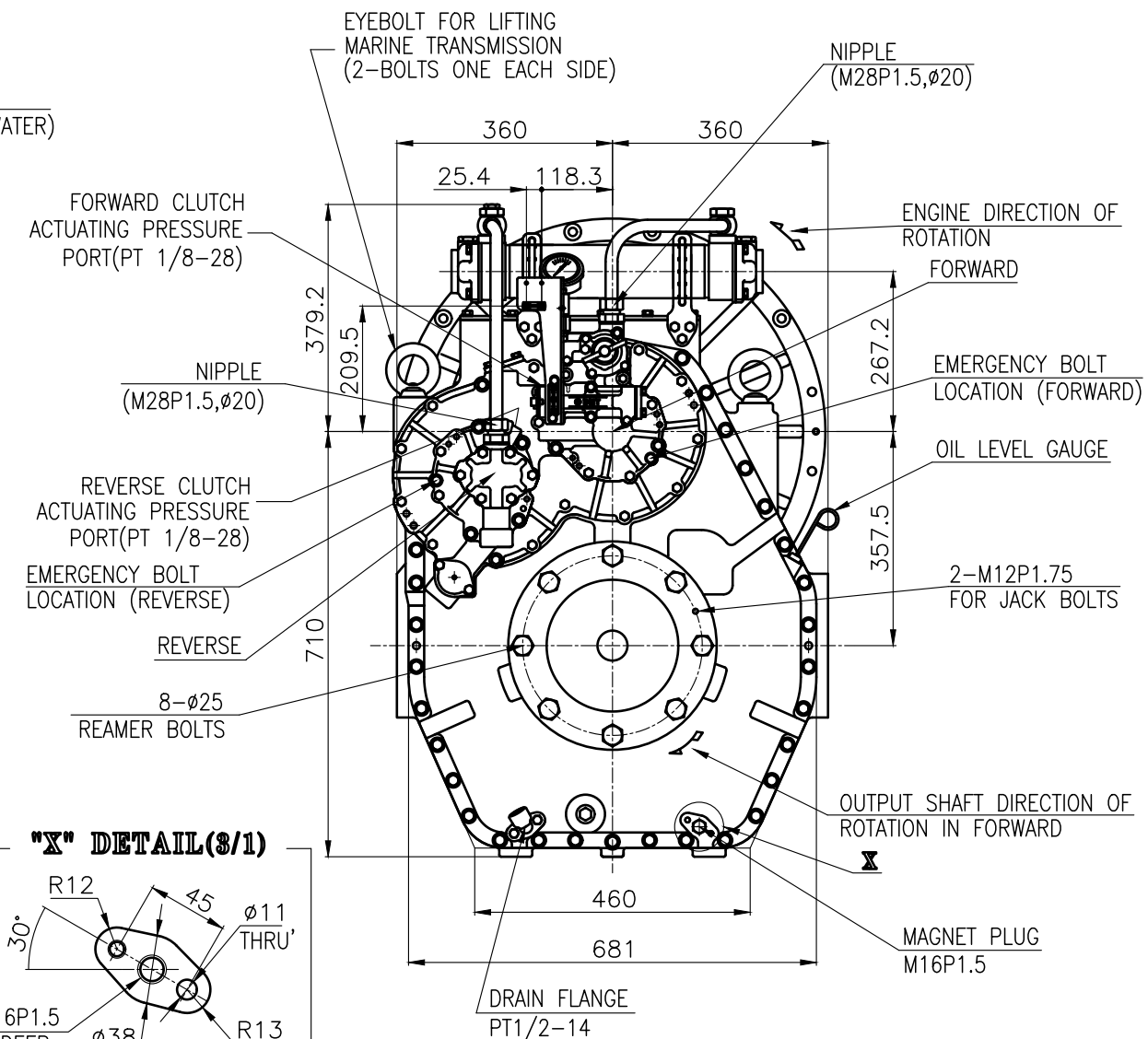
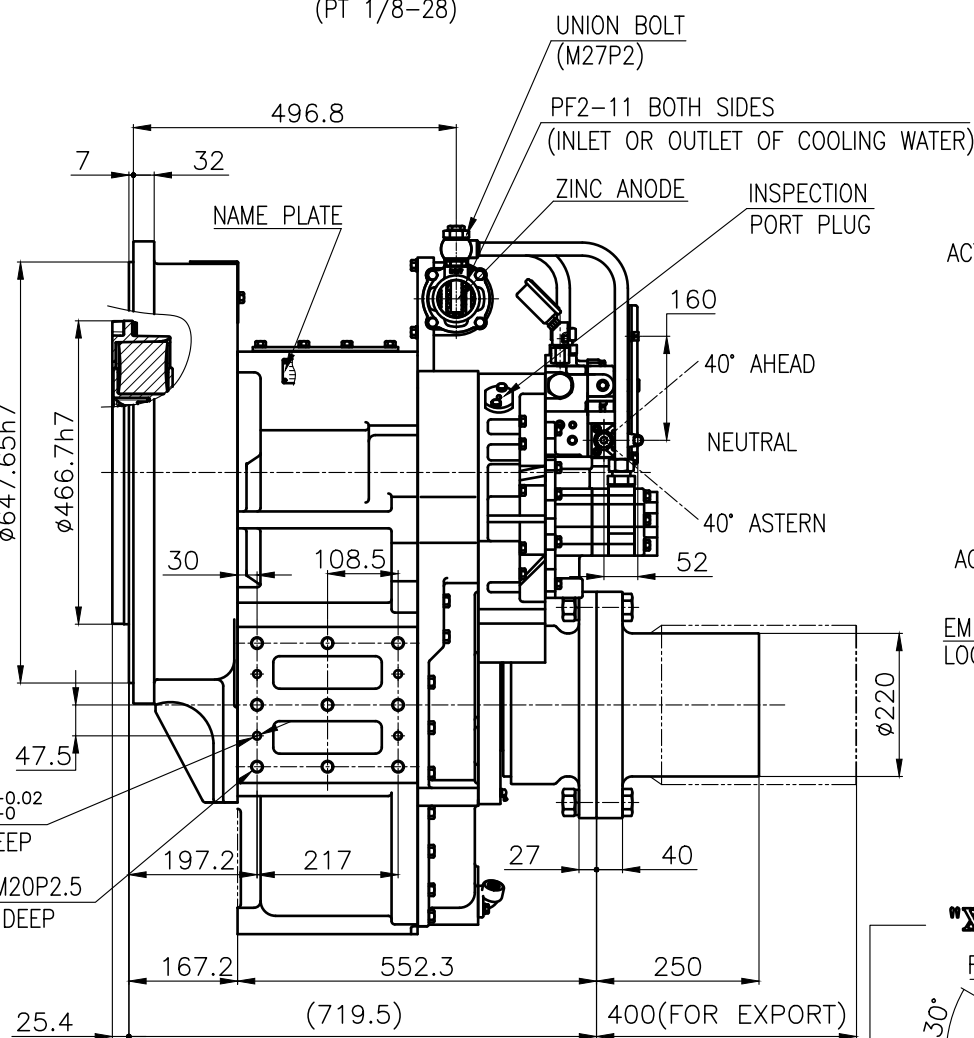
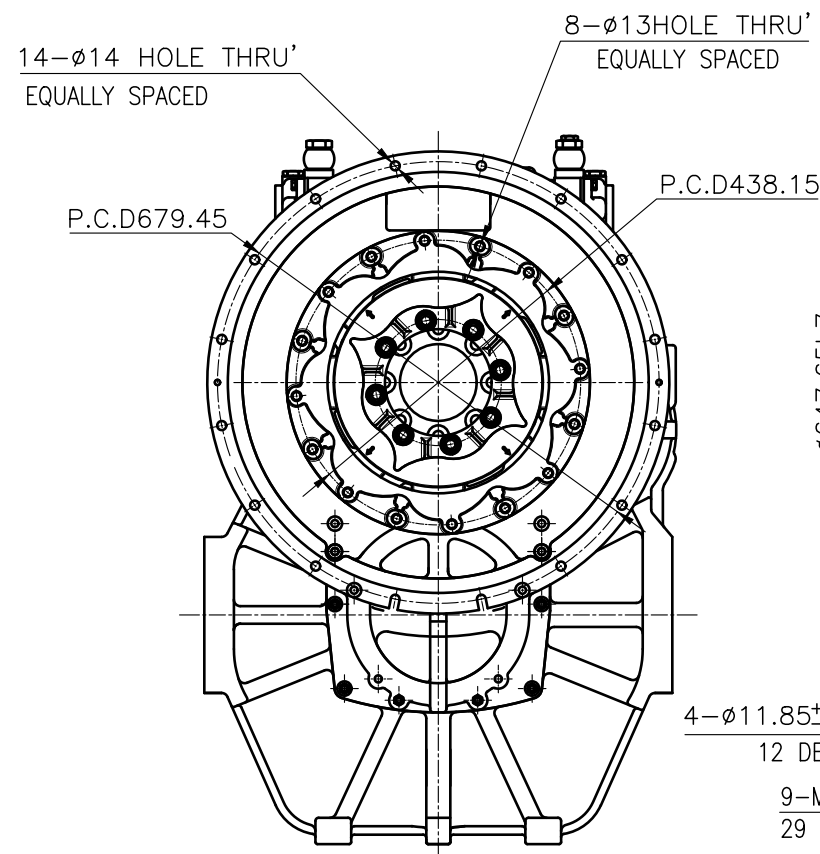


## INPUT COUPLING DIMENSION



[BY PASS SYSTEM]

DMT561HL MARINE TRSANMISSION SPECIFICATION		
GEAR RATIO	3.02, 3.28, 3.56, 4.07, 4.48, 4.95	
TOTAL WEIGHT	APPROX. 977 Kg (DRY, EXCEPT FOR PROPELLER COUPLING)	
OIL CAPACITY	APPROX. 19 L	
OIL VISCOSITY	SAE # 30	
OIL PRESSURE	1.96 ~ 2.54 MPa	CLUTCH OIL
DIRECTION OF ROTATION IN FORWARD	INPUT	C.C.W VIEWED FROM THE STERN
	OUTPUT	C.W VIEWED FROM THE STERN
OIL CHANGE INTERVAL	THE FIRST 100HOURS OF INITIAL OPERATION	
	AND EVERY 1000HOURS THEREAFTER	
SHIFTING LIMIT	UNDER 50% OF THE RATED ENGINE SPEED	
OIL COOLER	WATER FLOW 90 ~ 120 L/m	
	TEMPERATURE OF COOLING WATER	MAX 32°C
OPERATING TORQUE OF SHIFTING LEVER		UNDER 2.94Nm



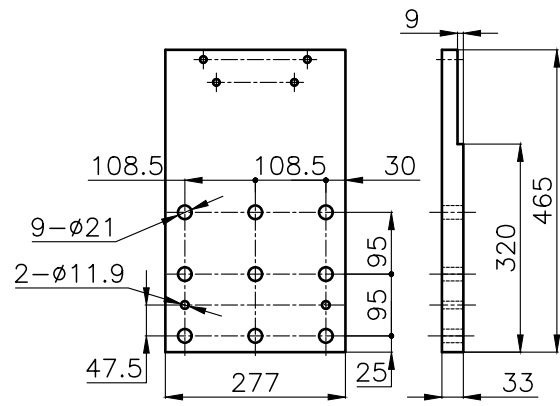
REMARK

1.HOUSING : SAE# 0


2.DRIVING RING : SAE 14"

3.COUPLING TYPE

CENTA FLEX COUPLING : 77318803



### BRACKET DIMENSION

공통 공차 TOLERANCE ON					번호 NO.	품명 PART NO.	명 PART NAME	개수 Q'TY	재질 MATERIAL	구경 SIZE	고비고 REMARKS
분수 FRACTIONS	소수 DECIMALS	각도 ANGLES			재질 MATERIAL			형식 TYPE	원도 번호 ORIGINAL DWG. NO.		
± —	± —	± —			 작성 DATE 2018.04.16 척도 SCALE 1/1			품명 NAME	MARINE TRANSMISSION		
절삭 가공					승인 APPROVED BY 검토 CHECKED BY 제도 DRAWN 설계 DESIGNED			도면 번호 DWG. NO.	56100GHA~F-014CFR 개정 (REV.) 000		
구경	조급	중급	정급								
1 초과 4 이하	± 0.3	± 0.1	± 0.05								
4 16	± 0.5	± 0.2	± 0.07								
16 63	± 0.7	± 0.3	± 0.1								
63 250	± 1.2	± 0.5	± 0.2								
250 1000	± 2.0	± 0.8	± 0.3								
D-I INDUSTRIAL					크기 SIZE			A 0	코드 번호 CODE ID. NO.		